



MS CIP Evaluation Application

COMMUNICATION INTERFACE PROTOCOL

QUICK START GUIDE

Document Number: DOC00620

Document Revision: B

MEMSENSE.COM

888.668.8743

TABLE OF CONTENTS

1.0 OVERVIEW	1
2.0 INSTALLATION	1
2.1 System Requirements	1
2.2 Installation	1
3.0 APPLICATION OPERATION	2
3.1 Quick Start	2
4.0 DOCUMENT REVISION HISTORY	4

1.0 OVERVIEW

The Memsense Communication Interface Protocol Evaluation Software (MS-CIP Eval SW) is implemented as a simple application to allow customers to rapidly connect to, configure and collect data from a Memsense Inertial Measurement Unit (IMU). The software currently supports the MS-IMU3020.

2.0 INSTALLATION

2.1 System Requirements

The MS-CIP Evaluation Software requirements are included in the table below.

Table 1 – System Requirements list

SYSTEM PARAMETER	REQUIREMENTS
Operating System	Windows 7 (.NET 4.5 or later)
Minimum Graphics Resolution	1024 x 768
Graphics Device	DirectX 9 with WDDM 1.0 or higher driver
Minimum RAM	1 GB
USB Port	1 port available

2.2 Installation

The MS-CIP Evaluation Software can be downloaded by following the link below to the Memsense website under the MS-IMU3020 product page (<https://memsense.com/products/ms-imu3020>) and clicking the MS-CIP Evaluation Software link. Simply follow the installation instructions provided in the installer.

3.0 APPLICATION OPERATION

3.1 Quick Start

1. Connect Green IMU end of Cable

Connect the green end of MS-IMU3020 interface cable to the MS-IMU3020



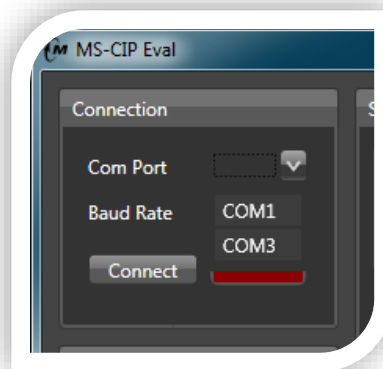
2. Connect the Black Circular Connector

Connect the black end of the MS-IMU3020 interface cable to the USB –DAQ.



3. Launch the MS-CIP Eval App

Start the MS-CIP Eval application from Start>All Programs>Memsense>MS-CIP Eval. Click the drop down arrow for the Com Port selection to view the available com ports as in the figure below.



4. Connect the Memsense USB-DAQ

Upon connecting the Memsense USB-DAQ to the USB port of the computer an additional com port associated with the USB-DAQ will appear in the Com Port drop down.



5. Select the Com Port

Select the com port that became available after plugging in the USB-DAQ.

6. Select the Baud Rate

Select 460800 bps from the Baud Rate options in the Connection window. The factory default baud rate for the MS-IMU3020 is 460800 bps, unless when ordering your device it was specified at a different factory default baud rate. If your device was ordered with a different baud rate then select that baud rate.

7. Click Connect

Click the Connect button in the Connection window. Upon clicking the Connect button the connection indicator turns from red to green indicating a successful connection. If the connection indicator turns yellow it usually means the baud rate doesn't match the device or a connector is disconnected.



4.0 DOCUMENT REVISION HISTORY

REV	STATUS	DESCRIPTION	DATE
A	Obsolete	Initial Release	3-4-2016
B	Released	Changed the document layout.	03-22-2024