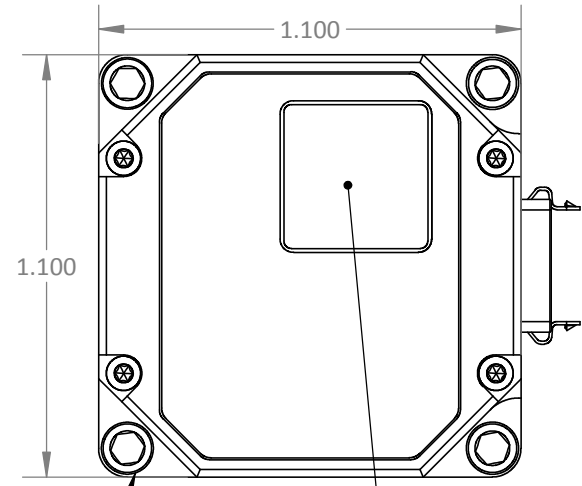
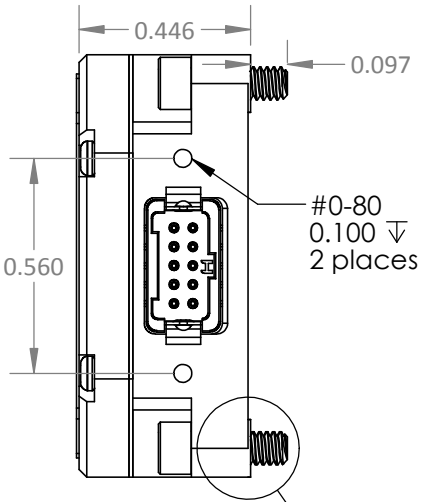


LOCATION
Ø 1/16 DOWEL PIN
0.090

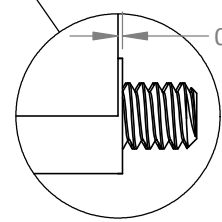


2D BAR CODE
MEMSENSE
MS-IMU3025M
MFG DATE:3/23/2019
PN:MP00075-001
REV:A
SN:29000

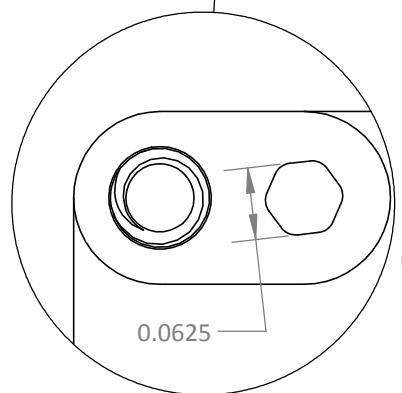
Mounting
2-56 Captive
Socket Head
Cap Screw
18-8 Stainless Steel
5/64" Drive
Note 1

0.0010

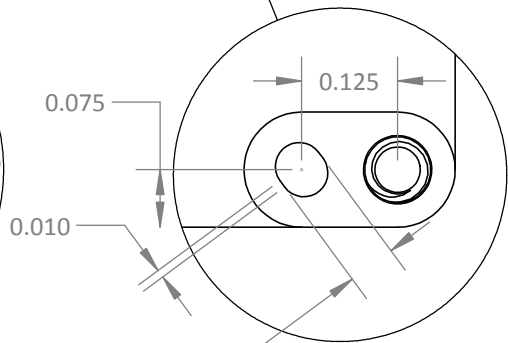
Relative to All
Mounting Surfaces



DETAIL C
SCALE 4 : 1



DETAIL A
SCALE 6 : 1



DETAIL B
SCALE 4 : 1

Note 1: Suggested Maximum Torque: 2.5 in-lbs
While this value is provided from reliable sources, there are many variables that will effect this value and the use of this information is at the sole risk of the user.

TITLE: MS-IMU3025 Dimensional Drawing Imperial			
UNLESS OTHERWISE SPECIFIED:		NAME	DATE
DIMENSIONS ARE IN INCHES		DRAWN	JB 04-05-2019
TOLERANCES		ENG APPR.	DL 04-05-2019
ANGULAR: MACH ±0.1		MFG APPR.	EL 04-05-2019
TWO PLACE DECIMAL ±0.010		DOC NO	
THREE PLACE DECIMAL ±0.003		DOC00733	
FOUR PLACE DECIMAL ±0.0005		REV	
INTERPRET GEOMETRIC TOLERANCING PER: ASME Y14.5-2009		A	
MATERIAL	6061-T6 AL	SIZE	PART NO
FINISH	MIL-A-8625 ANODIZE	A	MP00075
DO NOT SCALE DRAWING		SCALE: 2:1	WEIGHT:
		SHEET 1 OF 1	



PROPRIETARY AND CONFIDENTIAL
THE INFORMATION CONTAINED IN THIS DRAWING IS THE SOLE PROPERTY OF MEMSENSE, LLC. ANY REPRODUCTION IN PART OR AS A WHOLE WITHOUT THE WRITTEN PERMISSION OF MEMSENSE, LLC IS PROHIBITED.